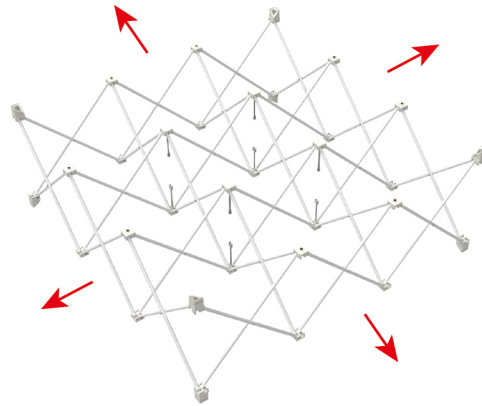


STEPS

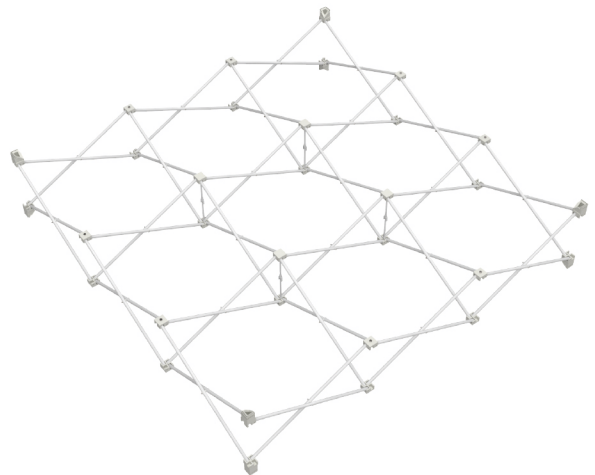
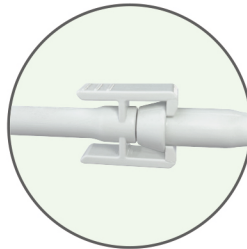
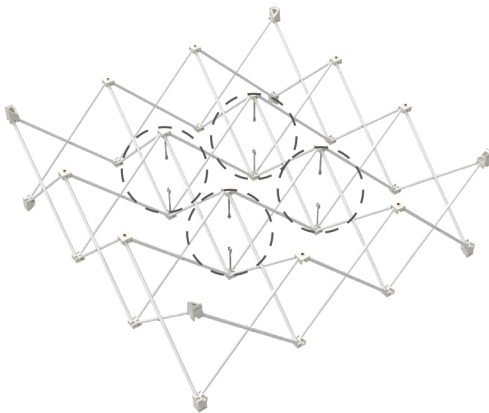
STEP 01

Expand frame from diagonal to shape.



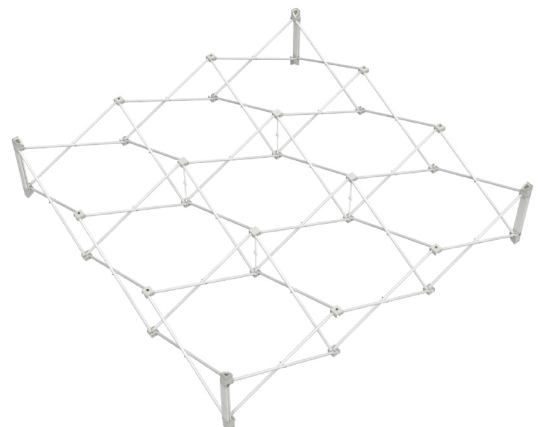
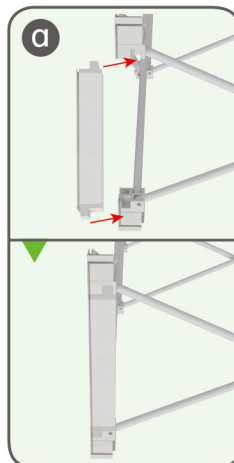
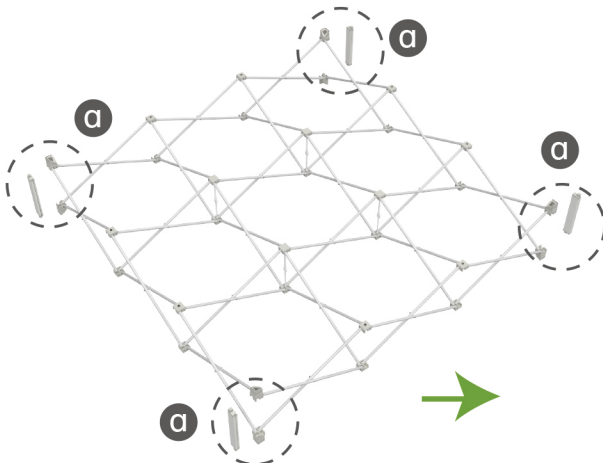
STEP 02

Align locking pieces up & down and clip together.



STEP 03

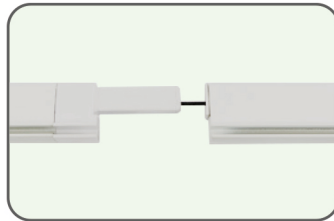
Insert short channel bars into end caps at 4 corners.



STEPS

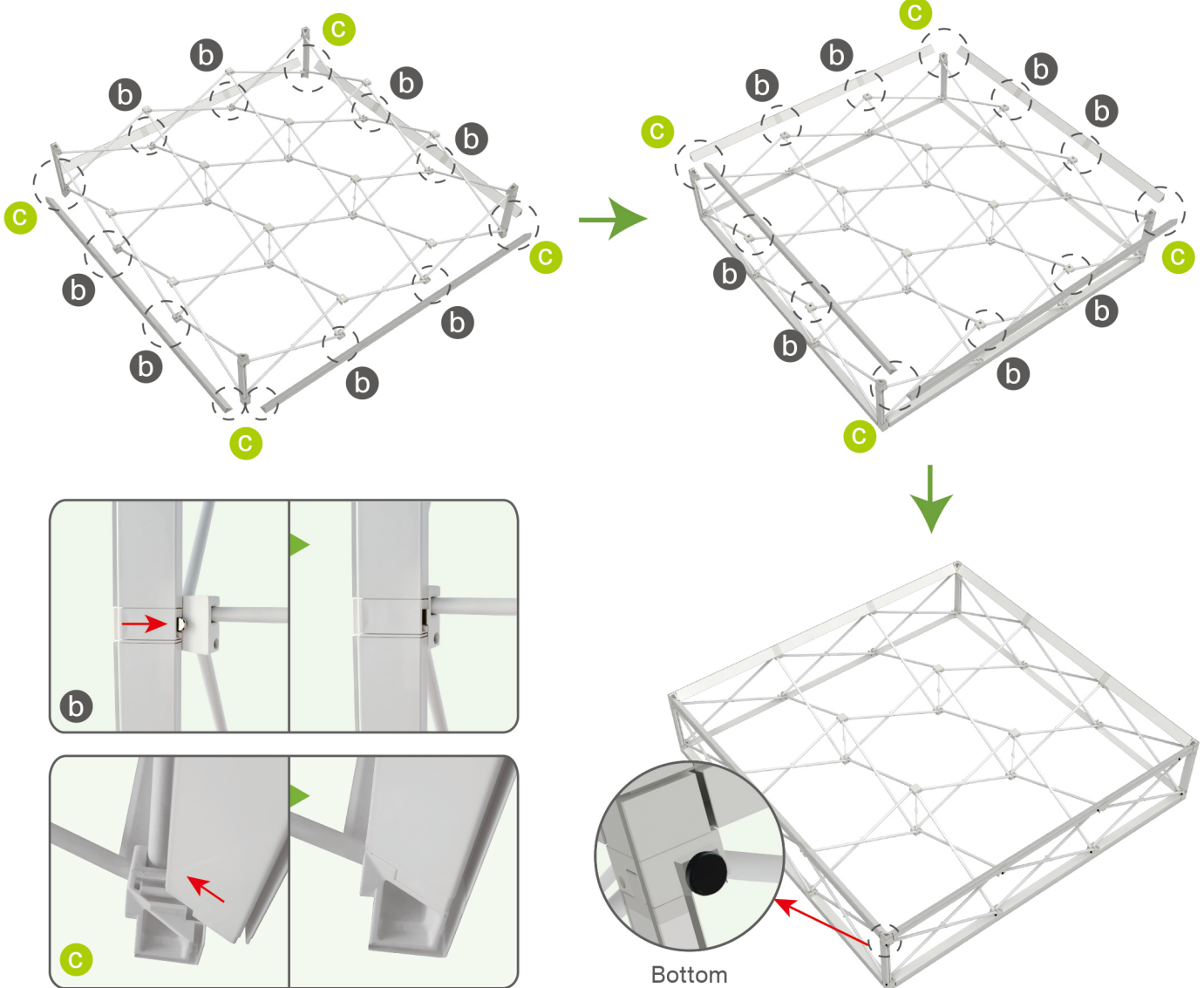
STEP 04

Connect channel bars with bungees to long channel bars.



STEP 05

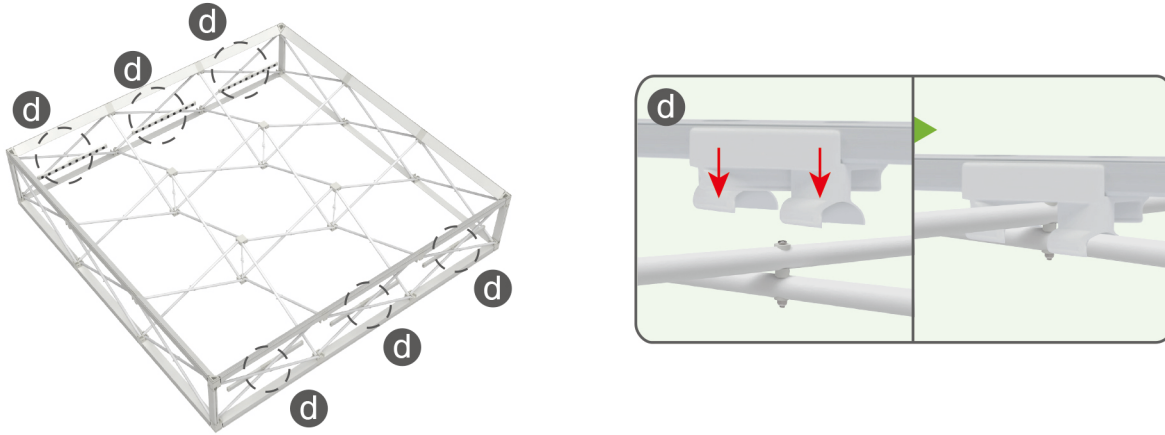
Slide long channel bars onto frame.



STEPS

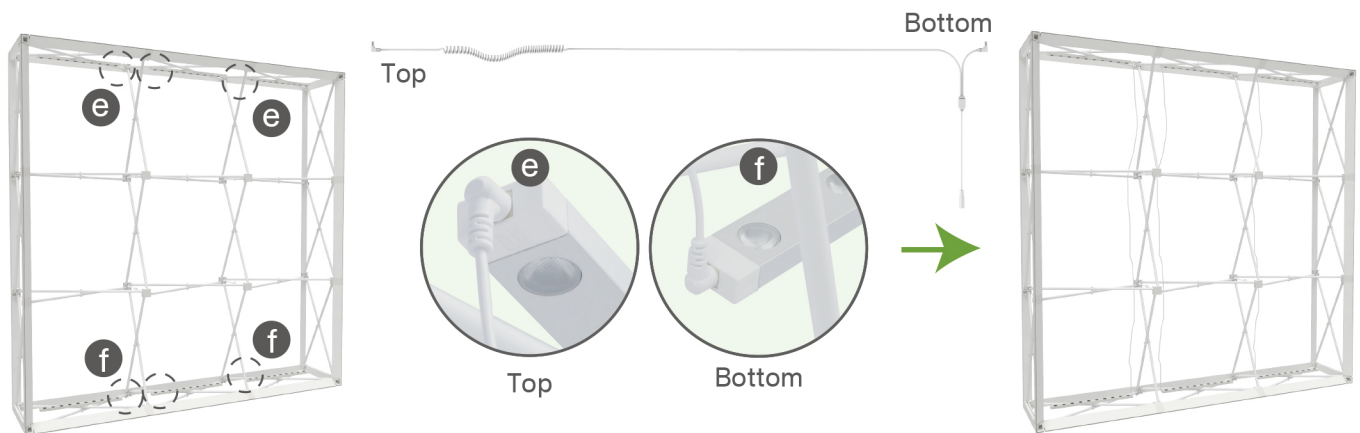
STEP 06

Clip LED light bars onto X-shaped poles at top & bottom.



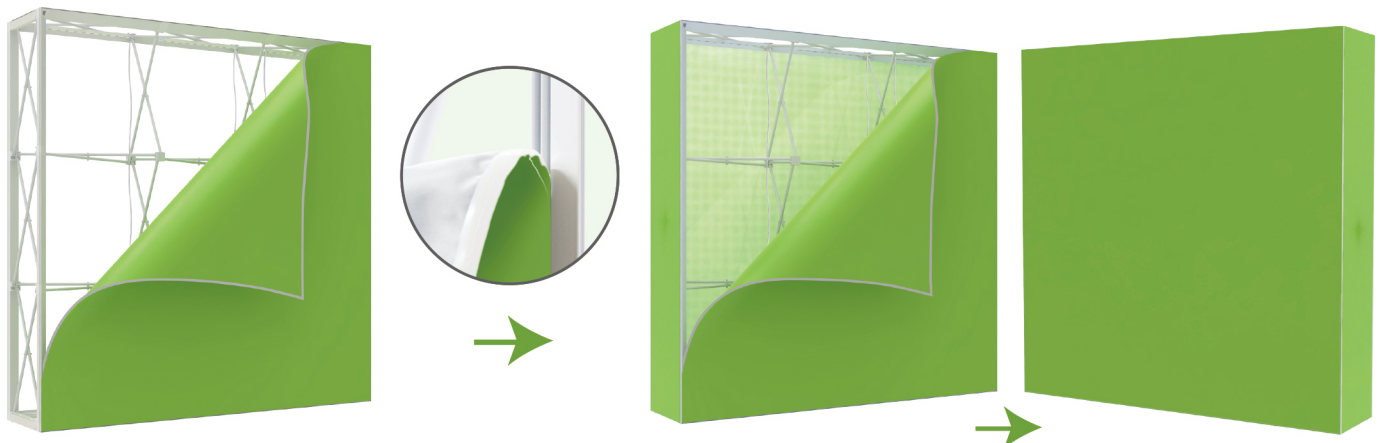
STEP 07

Make frame stand up, connect LED light bars at top & bottom with jump wires.



STEP 08

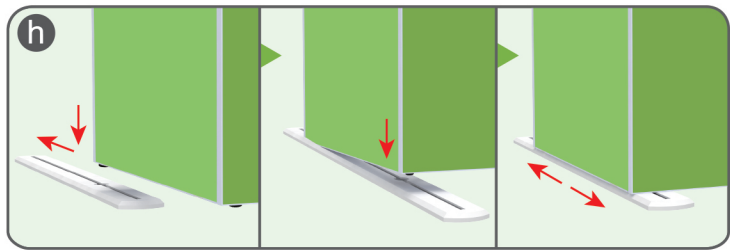
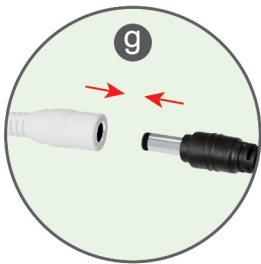
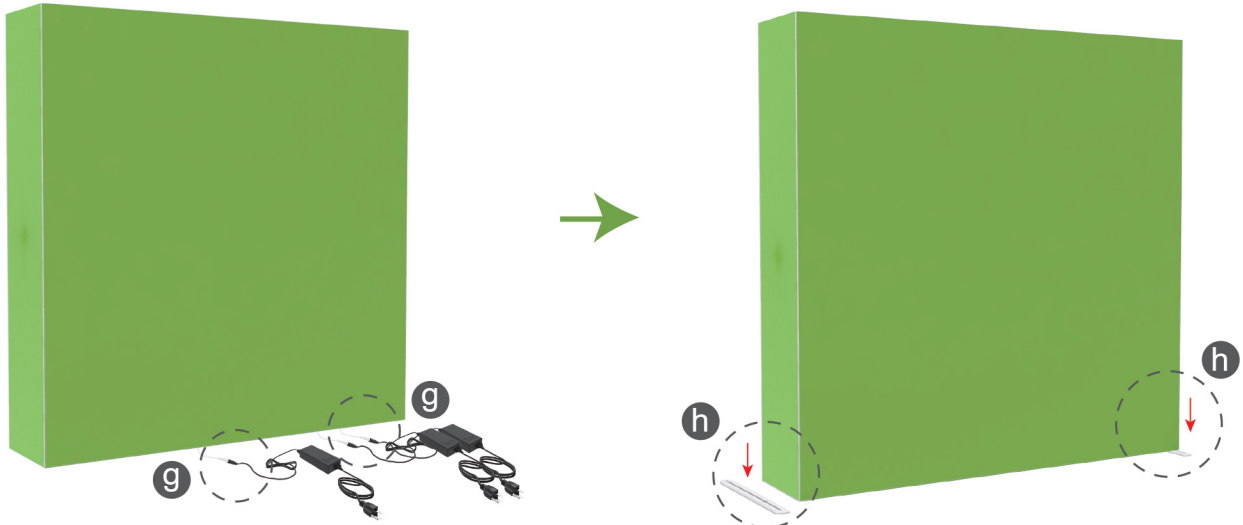
Insert silicone edge graphic pieces into channels from corners.



STEPS

STEP 09

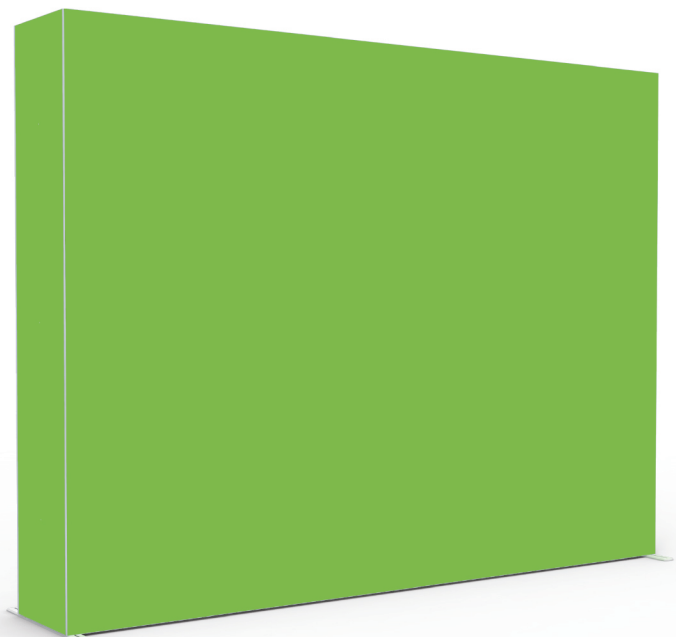
Connect jump wires to switching power supplies.



Slide base feet onto black knobs at bottom & adjust to make display stand straight.



SEG-PPLB-01



SEG-PPLB-02